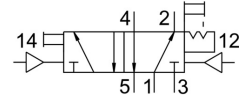
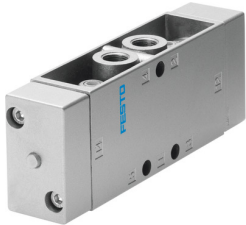


# Pneumatic valve JH-5-1/2

Part number: 10165

FESTO



## Data sheet

Feature	Value
Valve function	5/2, bistable
Actuation type	Pneumatic
Width	52 mm
Standard nominal flow rate	4500 l/min
Pneumatic working port	G1/2
Operating pressure	0 MPa ... 1 MPa
Operating pressure	0 bar ... 10 bar
Structural design	Plate seat
Nominal width	14 mm
Width dimension	69 mm
Type code	JH
Exhaust air function	With flow control option
Sealing principle	Soft
Mounting position	Any
Manual override	Detenting
Type of control	Direct
Pilot air supply port	External
Flow direction	Non-reversible
Symbol	00995757
Lap	Underlap
Pilot pressure MPa	0.12 MPa ... 1 MPa
Pilot pressure	1.2 bar ... 10 bar
b-value	0.3
Max. switching frequency	12 Hz
Changeover time	3 ms
Operating medium	Compressed air as per ISO 8573-1:2010 [7:4:4]
Information on operating and pilot media	Operation with oil lubrication possible (required for further use)
Corrosion resistance class (CRC)	1 - Low corrosion stress
Storage temperature	-20 °C ... 60 °C
Temperature of medium	-10 °C ... 60 °C
Pilot medium	Compressed air as per ISO 8573-1:2010 [7:4:4]
Ambient temperature	-10 °C ... 60 °C
Product weight	1130 g
Type of mounting	Optionally: On terminal strip With through-hole

<b>Feature</b>	<b>Value</b>
Auxiliary pilot air port 12	G1/4
Auxiliary pilot air port 14	G1/4
Pilot air port 12	G1/4
Pneumatic connection 1	G1/2
Pneumatic connection 2	G1/2
Pneumatic connection 3	G1/2
Pneumatic connection 4	G1/2
Pneumatic connection 5	G1/2
Note on materials	RoHS-compliant
Seals material	NBR TPE-U(PU)
Housing material	Die-cast aluminum